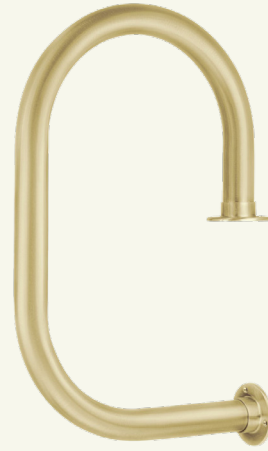


# Classic Service Bar Rail

2" OD

This classic service bar rail mounts to the top of your bar and the bar face to create a buffer between servers and guests, which improves efficiency at any commercial bar.



Creates a buffer between serving staff and guests.

## Standard Finishes



Custom finishing is available upon request.

## Dimensions

(1)	Width	16.00"
(2)	Height	24.00"
(3)	Tangent	9.00"

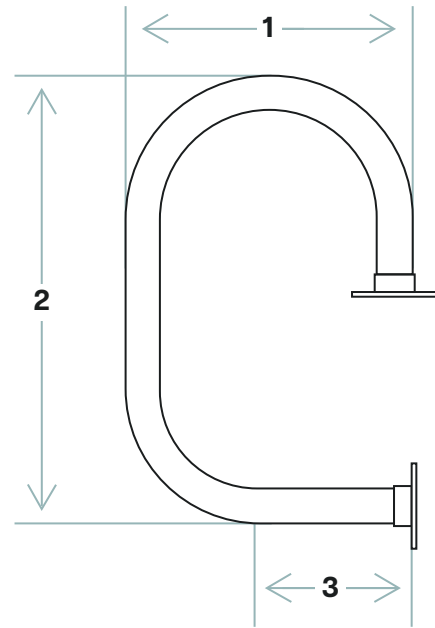
## Included Hardware

(2)	4" Flanges
(6)	#10 1-1/2" Mounting Screws
(2)	#8 3/4" Self-Drilling Set Screws
(1)	Bottle of Adhesive

## Installation

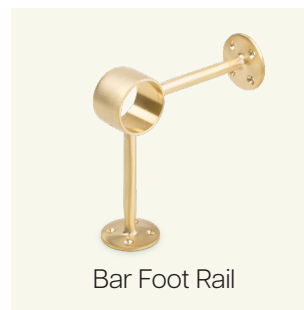
1. Affix flanges to each end of the service rail using set screws and if desired, adhesive. If adhesive is used, let the service rail set for 15 minutes.
2. Measure and mark the area on the bar counter and bar face where the service rail is to be mounted.
3. Mount the service rail by screwing the flanges to marked area on the counter and floor.

Visit [Kegworks.com/care-guide](https://www.kegworks.com/care-guide) to read our guide on how to properly prep, clean, and maintain all bar rail finishes.

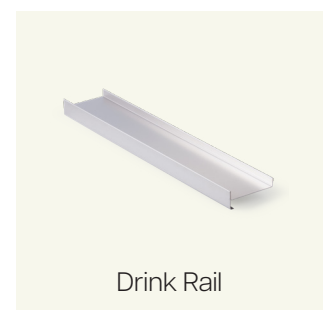


## Complete The System

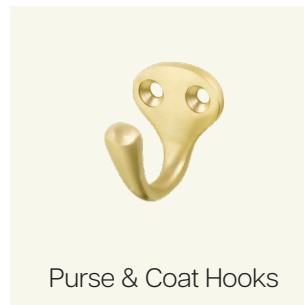
Make sure to get all the necessary components to complete your bar rail system.



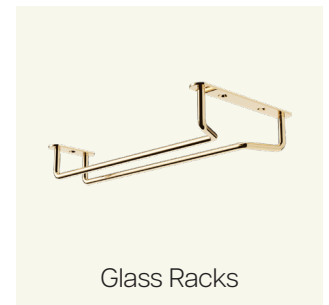
Bar Foot Rail



Drink Rail



Purse & Coat Hooks



Glass Racks