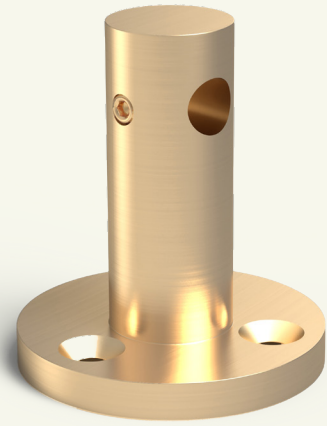


End Bracket

Gallery Rail

Start and end your gallery rail installations with this end bracket.

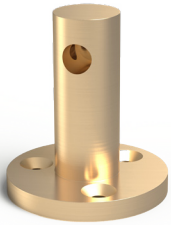


Standard Finishes

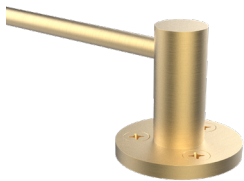


Brushed
Brass

Custom finishing is available upon request.



Durable brass
with sleek styling.



Used to start and end
runs of gallery rail.

Dimensions

(H)	Height	1.77"
(D ₁)	Diameter 1	1.57"
(D ₂)	Diameter 2	0.27"
(CP)	Centerpoint	1.38"
(I)	Inset	0.47"

Included Hardware

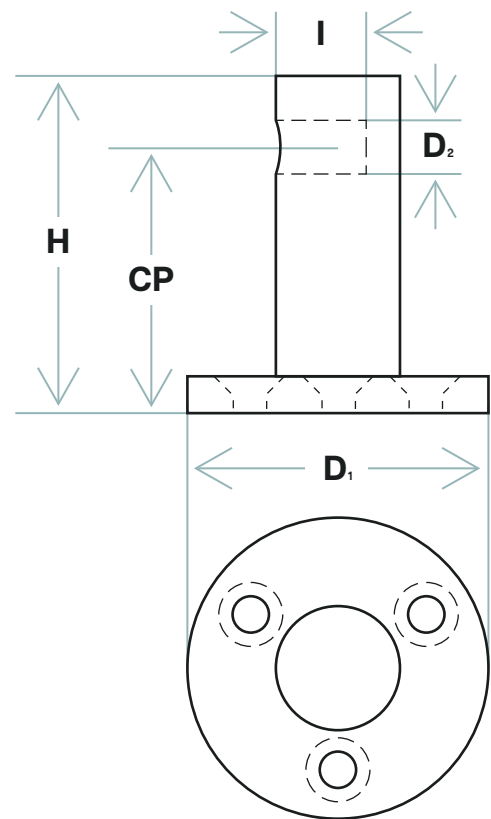
(3)	Mounting screws
(1)	#10-32 set screw

Installation

1. Attach the bracket to the surface using the included mounting screws.
2. Slide the rod into the bracket and tighten the set screw.

Care and maintenance varies by finish. Given the nature of the product, typical wear and tear may be noticed with your shelving over time, such as scuffs, scratches, and dirt.

Visit [Kegworks.com/care-guide](https://www.kegworks.com/care-guide) to read our guide on how to properly prep, clean, and maintain all of our metal finishes.



Complete The System

Make sure to get all the necessary components to complete your shelving system.

